

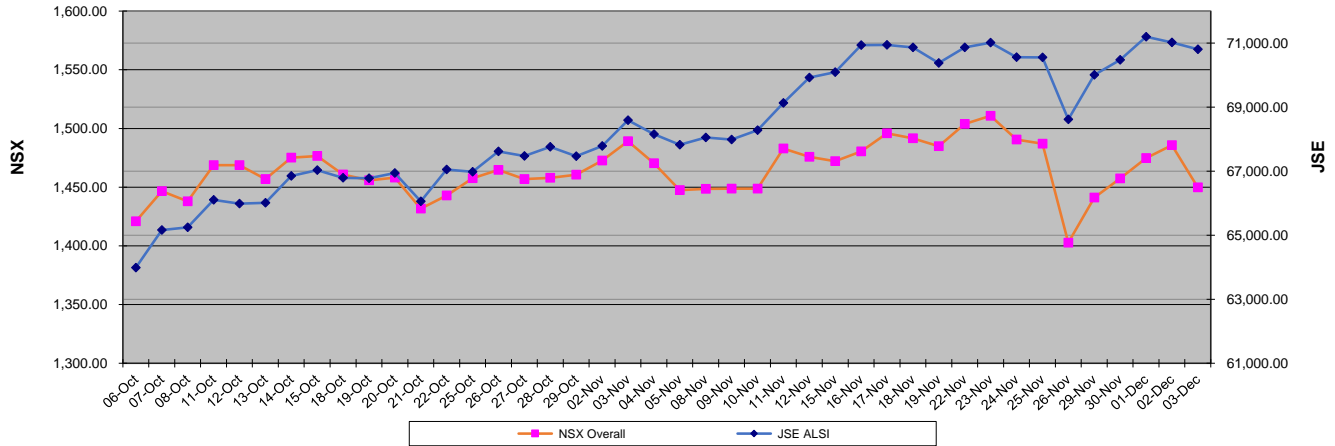
NAMIBIAN STOCK EXCHANGE

Weekly Market Index

29 November - 03 December 2021

| FTSE Index Code | Major/Sector Markets | Capital Index (NAD) Today | Capital Index (NAD) Prev. Week | Change | % Change | Actual Dividend Yield | Movement since Dec 2020 | Dec 2020 | High 2021 | Low 2021 |
|-----------------|------------------------|---------------------------|--------------------------------|----------|----------|-----------------------|-------------------------|-----------|-----------|-----------|
| 13 (ALSH) | JSE All Share Index | 70,807.60 | 68,615.00 | 2,192.60 | 3.20% | - | 19.19% | 59,408.70 | 71,198.10 | 60,479.40 |
| 14 N098 | Overall | 1,449.83 | 1,402.70 | 47.13 | 3.36% | 4.91 | 17.66% | 1,232.26 | 1,531.17 | 1,226.42 |
| 15 N099 | Local | 530.35 | 537.68 | (7.33) | -1.36% | 4.64 | 16.23% | 456.30 | 543.43 | 411.70 |
| 17 N15 | Telecommunications | 290.17 | 290.17 | - | 0.00% | 1.57 | 10.97% | 261.49 | | |
| 18 N20 | Health Care | 38.02 | 38.48 | (0.46) | -1.20% | - | 9.57% | 34.70 | | |
| 19 N30 | Financials | 405.32 | 379.53 | 25.79 | 6.80% | 4.34 | 11.41% | 363.81 | | |
| 20 N35 | Real Estate | 1,439.22 | 1,342.38 | 96.84 | 7.21% | 7.97 | - | - | | |
| 21 N40 | Consumer Discretionary | 2,410.26 | 2,249.10 | 161.16 | 7.17% | 6.84 | 25.57% | 1,919.39 | | |
| 22 N45 | Consumer Staples | 1,011.70 | 946.86 | 64.84 | 6.85% | 2.80 | 26.28% | 801.19 | | |
| 23 N50 | Industrials | 471.21 | 451.06 | 20.15 | 4.47% | 0.92 | 66.08% | 283.72 | | |
| 24 N55 | Basic Materials | 583.30 | 585.19 | (1.89) | -0.32% | 5.99 | 18.45% | 492.43 | | |
| 25 N65 | Utilities | 1,000.00 | 1,000.00 | - | 0.00% | - | - | - | | |

NSX Overall & JSE ALSH Indices



NSX Local Index

